

APRIL 1983

A PLAT OF MARTIN DOWNS

SHEET 2 OF 2

PLAT NO. 3

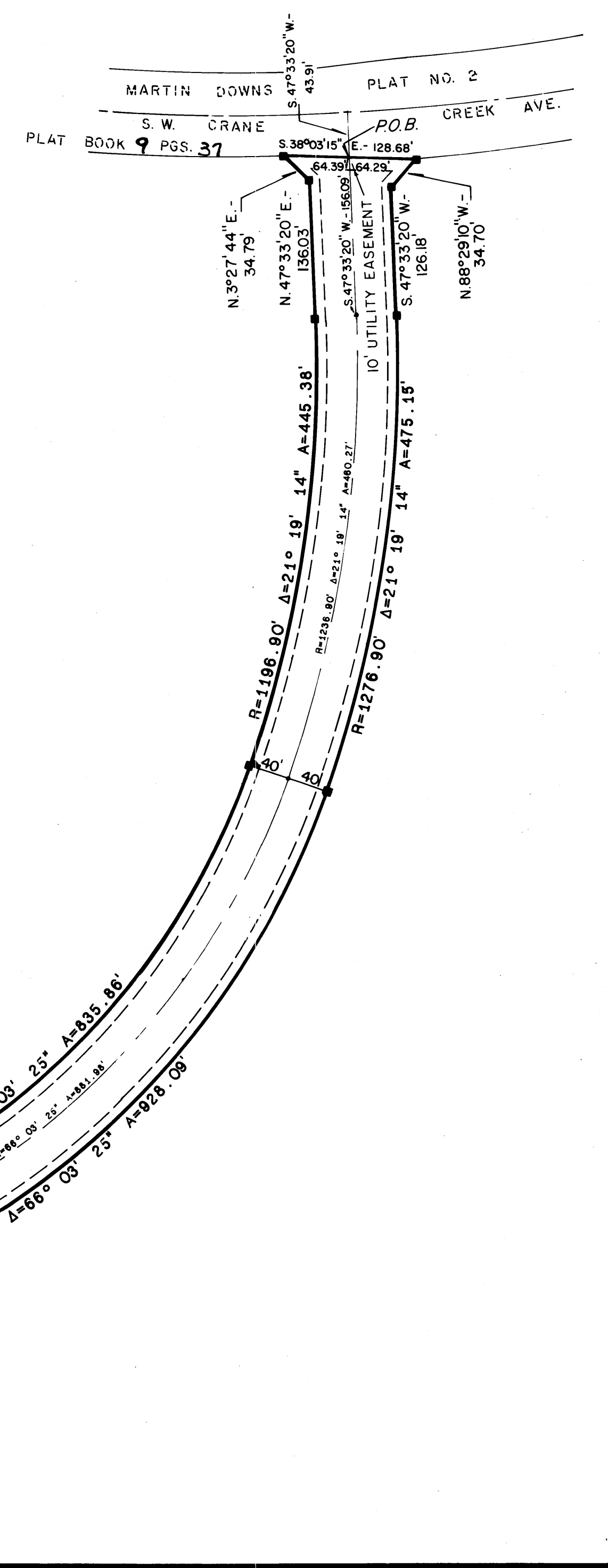
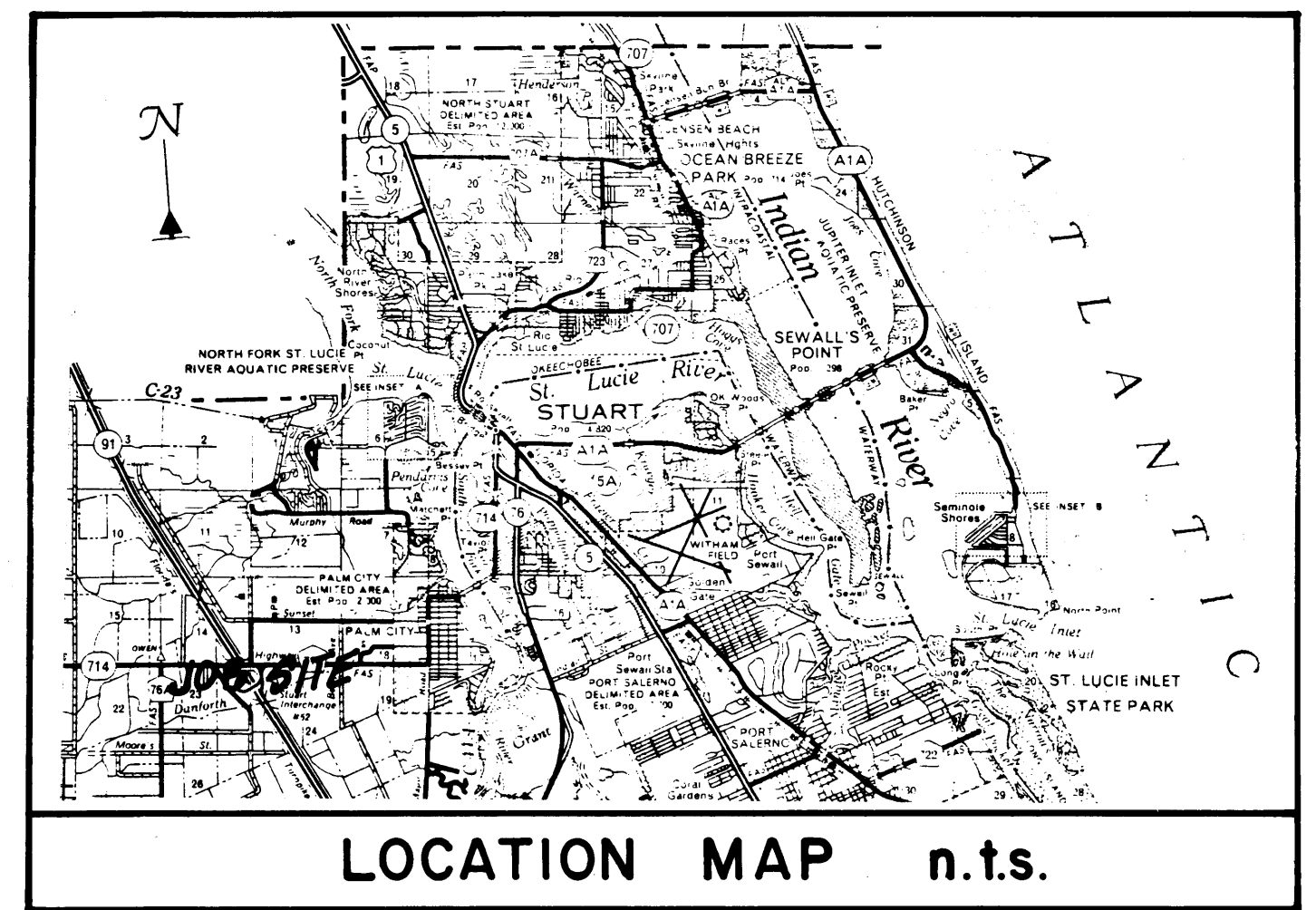
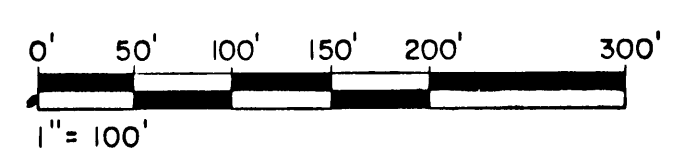
BEING A PART OF MARTIN DOWNS, A P.U.D.
LYING IN SECTIONS 13 & 14, TWP. 38 S., RGE. 40 E.
MARTIN COUNTY, FLORIDA

I, LOUISE V. ISAACS,
CLERK OF THE CIRCUIT
COURT OF MARTIN COUNTY,
FLORIDA, HEREBY CERTIFY
THAT THIS PLAT WAS FILED
FOR RECORD IN PLAT
BOOK 9, PAGE 38,
MARTIN COUNTY, FLORIDA,
PUBLIC RECORDS, THIS
DAY OF _____,
A.D. 1983.

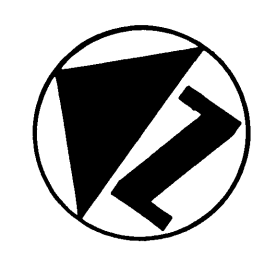
LOUISE V. ISAACS, CLERK
CIRCUIT COURT
MARTIN COUNTY, FLORIDA

BY _____
DEPUTY CLERK

FILE NO. _____



- LEGEND**
- P.R.M. (PERMANENT REFERENCE MONUMENT)
 - P.C.P. (PERMANENT CONTROL POINT)



UNPLATTED

UNPLATTED

HERCWOOD
PLAT NO. 1
PLAT BOOK 7
MARTIN COUNTY,
FLORIDA
PAGE 35

J. J. BLUEPRINTERS, WEST PALM BEACH

LINDAHL, BROWNING, FERRARI & HELLSTROM, INC. Consulting Engineers, Planners & Surveyors		2	2
JUPITER, FLORIDA	STUART, FLORIDA		
FORT PIERCE, FLORIDA			